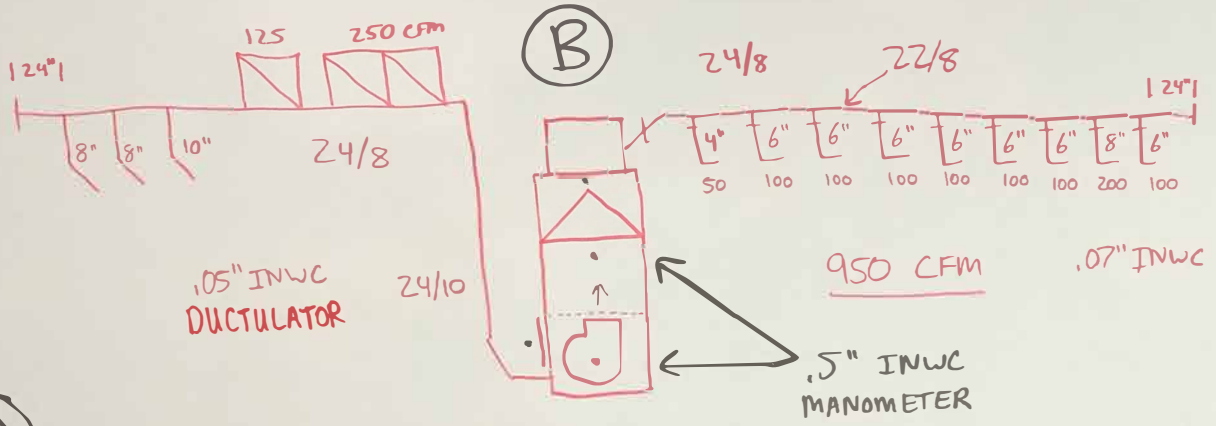


STATIC PRESSURE REF TO THE AMOUNT OF PRESSURE MEASURED IN INCHES OF WATER WHEN AIR MOVES THROUGH AN OBJECT (DUCTWORK)

THE PUSH OF AIR MUST BE GREATER THAN THE RESISTANCE TO THE FLOW OR LITTLE TO NO AIR WILL CIRCULATE THROUGH THE DUCTS



★ PLEASE DO NOT ERASE!!

(A) QUICK LOAD CALC.  
 FARM HOUSE / LOOSE BUILD / UNCONDITIONED

HEAT:  $\square \times 33 = 66 \text{ K}$   
 COOL:  $\square \times 20 = 40 \text{ K}$

MODERN BUILD  
 HEAT:  $\square \times 30 = 60 \text{ K}$   
 COOL:  $\square \times 18 = 36 \text{ K}$

2000  $\square$  (SQFT)

130 CFM PER 10K BTUH  
 84 CFM PER  $\square$

(C) FURNACE SIZING

$$\text{BTUH} = 1.08 \times \text{CFM} \times \Delta T (55)$$

$$1.08 \times 950 \times 55 = 56,430$$

FURNACES

- 96% 59SCA06017-14 3.5 TON BLOWER
- 80% 58STA070-1-12 3 TON BLOWER